



HYGGE HUS SENIOR LIVING COMMUNITY

DESIGNED BY - EMILY PLATT, CLASS OF 2023

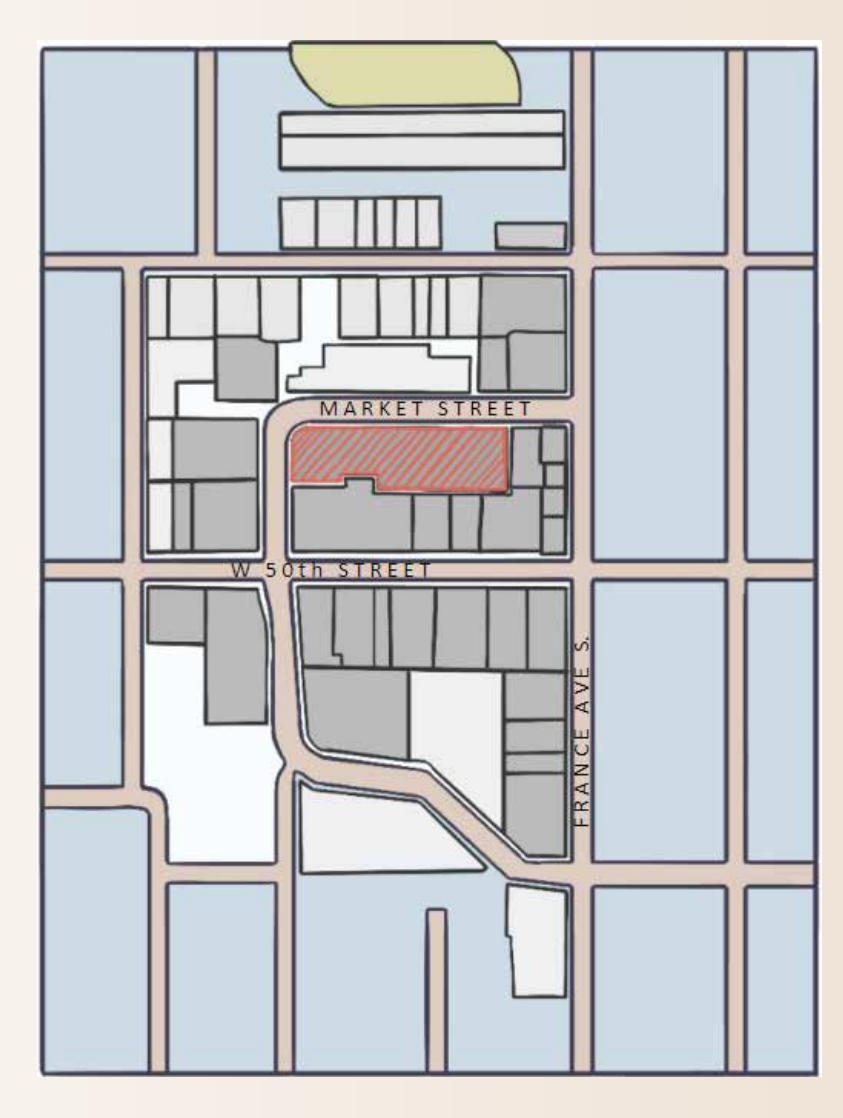
DESIGN CONCEPT - HYGGE

Hygge (hyoo - guh) is a Danish term for the pursuit of coziness and comfort. As a way to make the best of cold and dreary weather, people gather with loved ones, light candles, and prioritize self care in order to find joy in life's simple pleasures.

Hygge Hus will encourage its residents to embrace this mindset. As life progresses, people may find themselves stepping away from rushed lifestyle and beginning to prioritize people and activities they truly enjoy. By incorporating hygge inspired themes and weaving them with elements of the place attachment theory, Hygge Hus will provide opportunities for older adults to adjust to new physical abilities, relationships, and values through gathering with the communities, participating in wellness activities, an seeking moments of solitude.

SITE CONTEXT

- 5 story building with 1 level below grade for parking
- Located at 3937 Market Street in Edina, Minnesota. This plot is within the 50th & France neighborhood, which offers many amenities within close walking distance
 - Grocery Store
 - Banks
 - Parks
 - Public Transportation
 - Childcare
 - Shops



DESIGN GOALS IMPLEMENTATION

- The overall design remained cozy and to the human scale, keeping the feeling of the space comfortable and familiar
- Successfully incorporated a variety of elements that support place attachment as ways for residents to personalize their new home and establish neighborhood like connections
- Maintained a neutral yet warm and cozy material palette to reinforce the design concept Hygge
- Use of lighting provides opportunities for low, soft lighting when desired
- Designed spaces to encourage residents to engage in the community and utilize the many amenity spaces
- Provided access to natural elements such as sunlight, live foliage, natural materials and textures, and fresh air

AMENITY SPACE MATERIALITY

- Traditional Style Trim
- Wood plank ceiling and wall applications, to be finished in selected stain or paint color
- Brass metal finishes
- Light, neutral wall coverings to add interest

PLACE ATTACHMENT THEORY

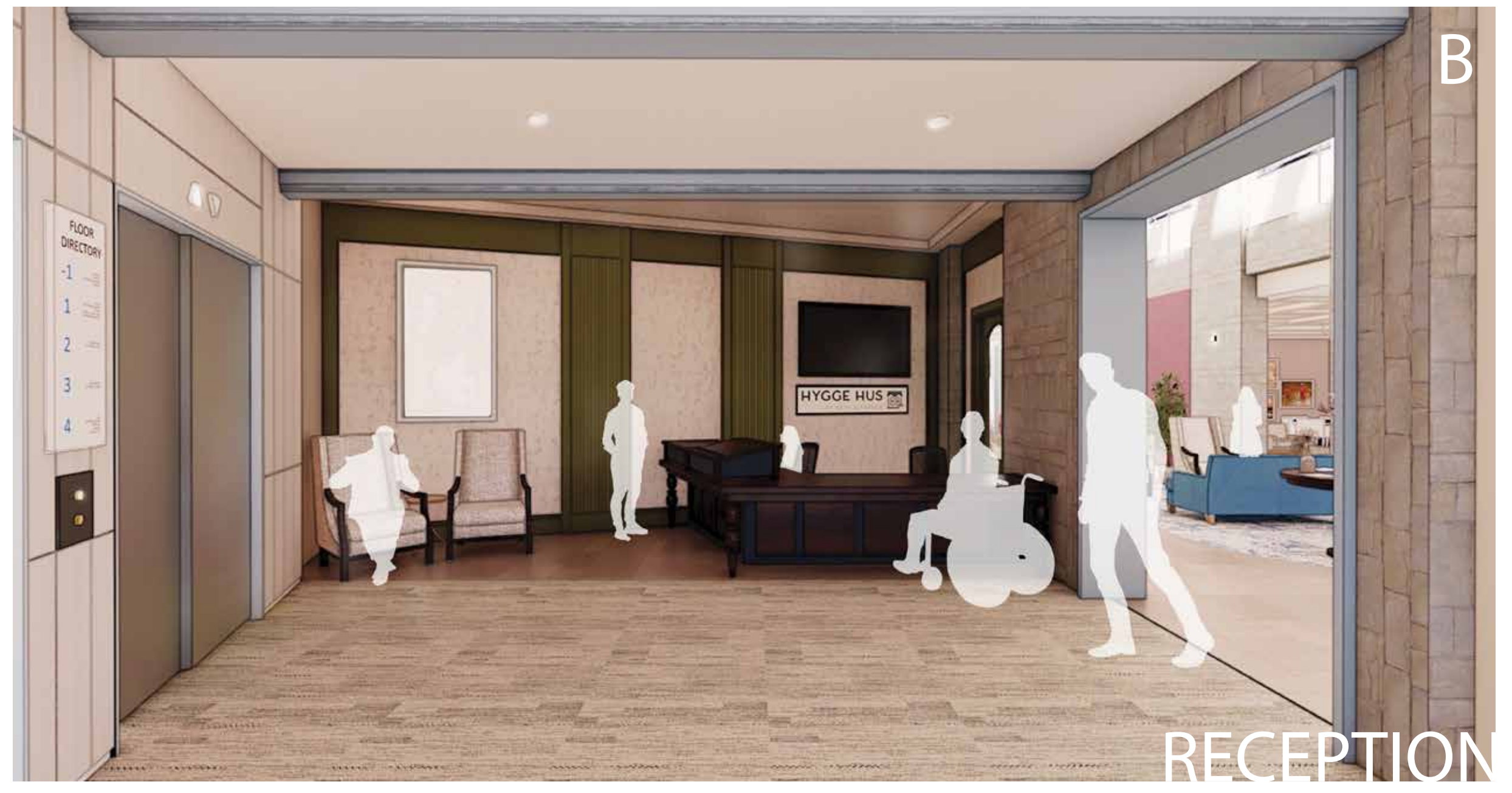
- Emotional connection between people and places
- Ancestral connection to Scandinavia as there is a relatively high population of Swedish descendants in Minnesota
- Encourage a sense of belonging and community within the facility's people and the built environment
- Community engagement opportunities through classes, shows, sales, and performances
- Provide personalization opportunities throughout facility by using bulletin boards, chalk boards, art galleries, library, and more
- Include a "front porch" for each floor to display achievements, resident information, weekly updates, and community announcements

GROUND FLOOR PLAN



VIEW UPON ENTRY TO THE FACILITY.

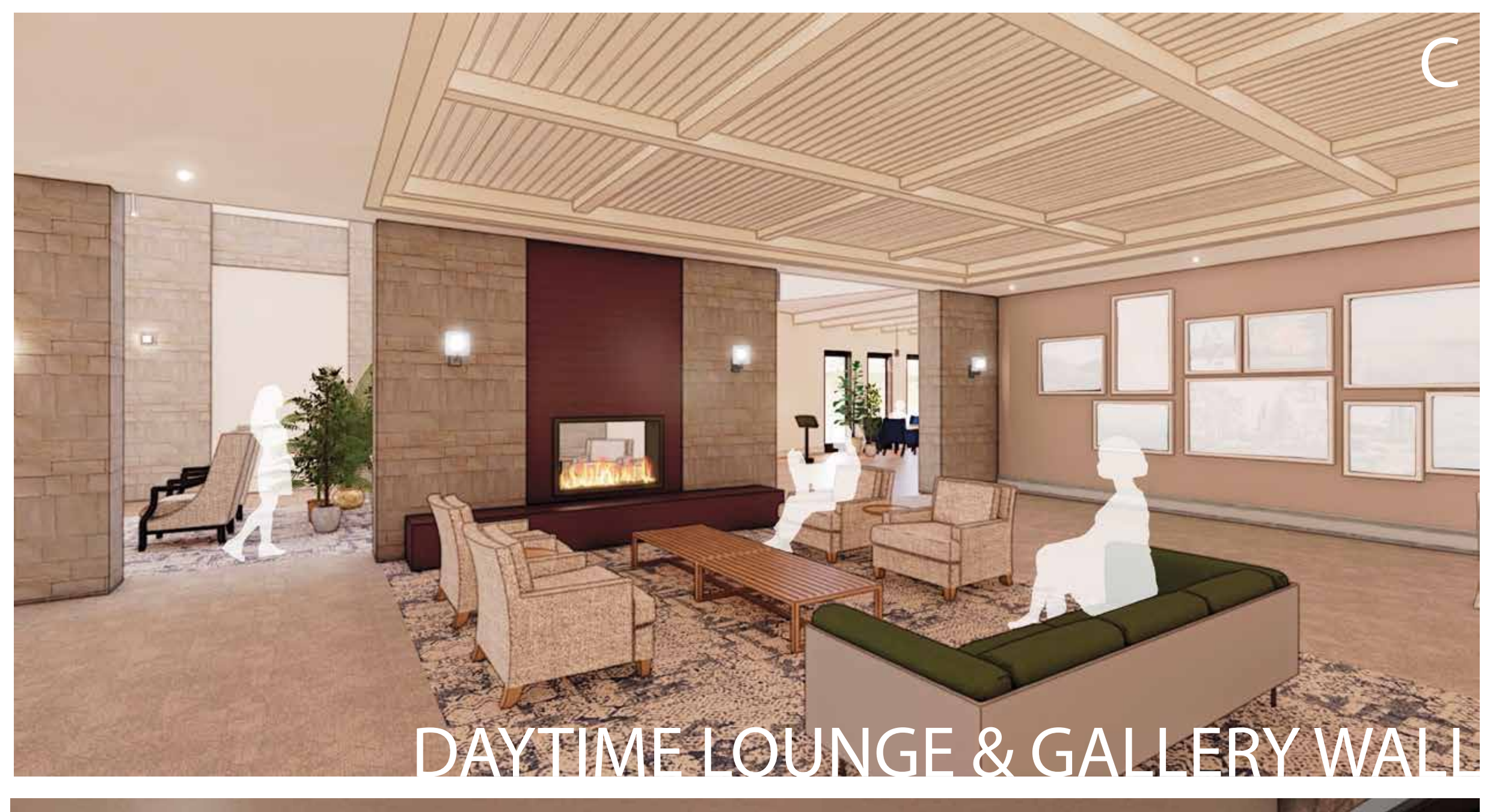
- ELEVATOR BANK EASILY ACCESSIBLE
- CUSTOM RECEPTION DESK OFFERING VARIETY OF WORK SURFACES
- COMPANY BRANDING PRESENT THROUGH WALL GRAPHICS, AND TV SCREEN
- LOWER CEILING HEIGHT CONTRASTS AGAINST HIGH HEIGHT IN ATRIUM



DOUBLE SIDED FIREPLACE

LOWER BACK LOUNGE SEATING

GALLERY WALL TO REINFORCE PLACE ATTACHMENT THEORY



LOTS OF NATURAL LIGHT

MEANT TO EMANATE AN URBAN CAFE WITH INDOOR/OUTDOOR SEATING

ACCESS TO PATIO

BENCH AT END OF VIEW WITH SHELVES TO HOLD BRANDED BLANKETS



STURDY ARM CHAIR SEATING

NATIVE WILDFLOWER PLANTER IN CENTER

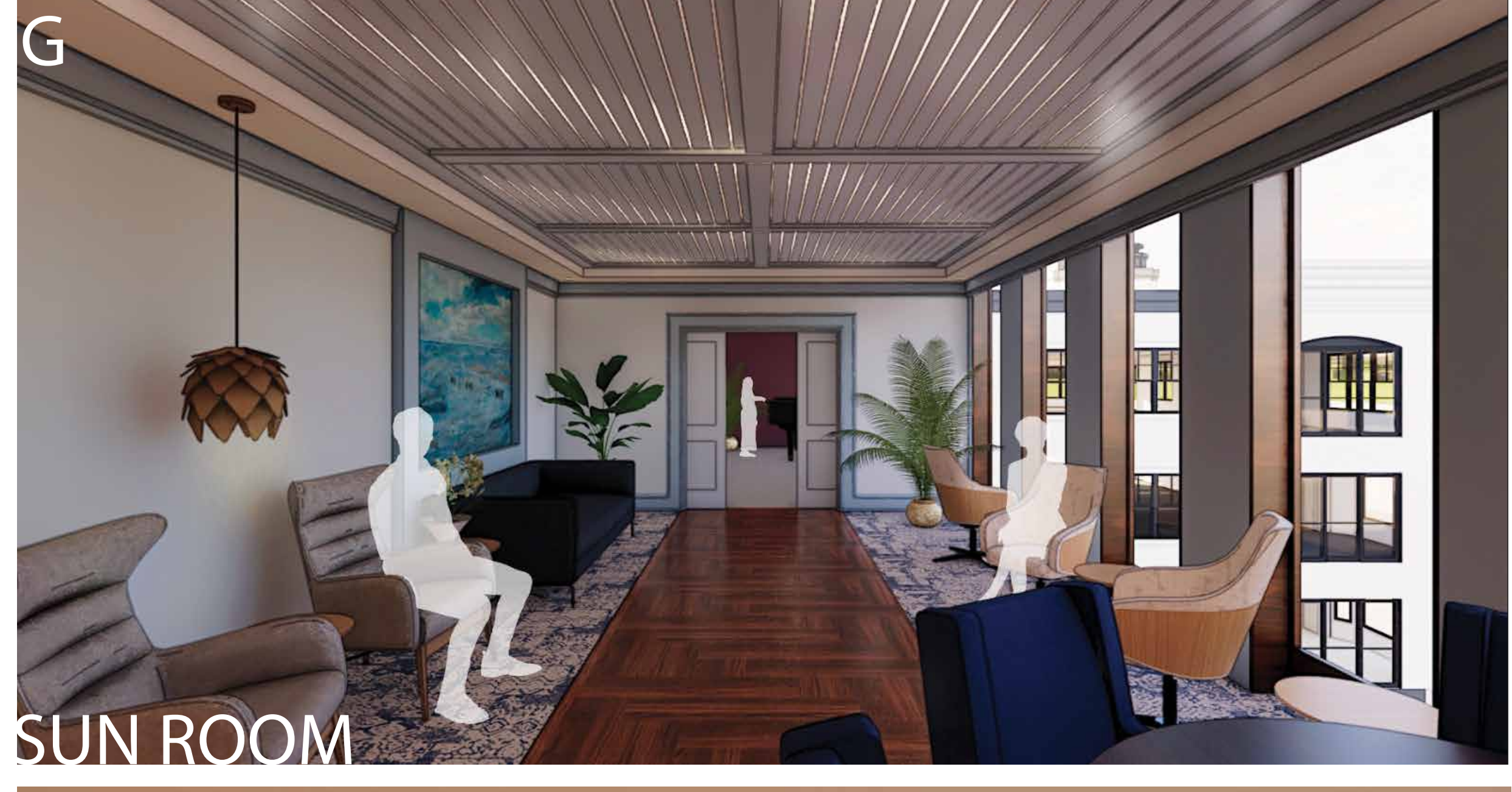
RESIDENTIAL STYLE WAINSCOTING AND TRIM

WARM, EARTH TONE COLORS OF LIME WASH PAINT



FULL SERVICE KITCHEN FOR RESIDENTS TO RESERVE AND HOST PARTIES

BILLIARDS TABLE, TV SCREEN, AND BOOKSHELVES PROVIDE ENTERTAINMENT AND A HOME STYLE FEEL



THE RESIDENCES



- Wide clearances to allow for aging in place and the use of wheelchairs
- Open face shelving to display items stored away so they don't get forgotten if not visible to the resident
- Relatively neutral finishes as to provide a "blank slate" for residents to make it their own
- Grab bars, accessible heights, handheld shower head, and bench in restroom to aid in accessibility
- Unique unit shape to give each unit individuality
- Primarily drawer cabinetry in kitchen to aid in accessibility and ease of use

RESIDENCE MATERIAL PALETTE



- CAFE, DINING, AND LOUNGE
 - CAFE SUPPLIED BY LOCAL BAKERY AND MAIN DINING KITCHEN WITH DAILY SPECIALS
 - SEATING & LOUNGE SEPARATED BY DOUBLE SIDED FIREPLACE
 - SKYLIGHT OVERHEAD WITH LATTICE AND FAKE FOLIAGE TO BLOCK SOME DIRECT SUNLIGHT
- SUN ROOM
 - SPACE FOR LOUNGING, CONVERSATION, AND VIEWING OUTSIDE FROM THE 4TH FLOOR
 - DETACH FROM TECHNOLOGY AND PLAY GAMES, CONNECT WITH NEIGHBORS, OR PLAY THE PIANO

FOURTH FLOOR PLAN

